

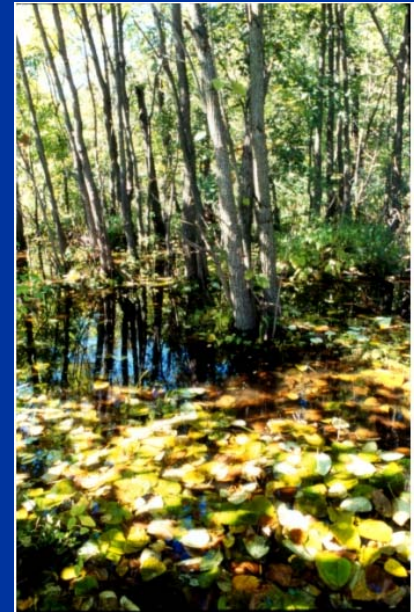
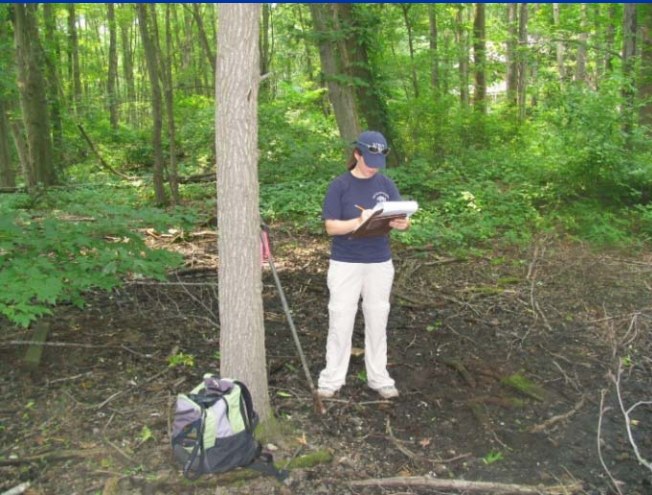


WETLAND AND STREAM RESOURCES IN NEW YORK CITY; MONITORING, PROTECTION AND MANAGEMENT PRIORITIES IN THE FACE OF LAND USE AND CLIMATE CHANGE

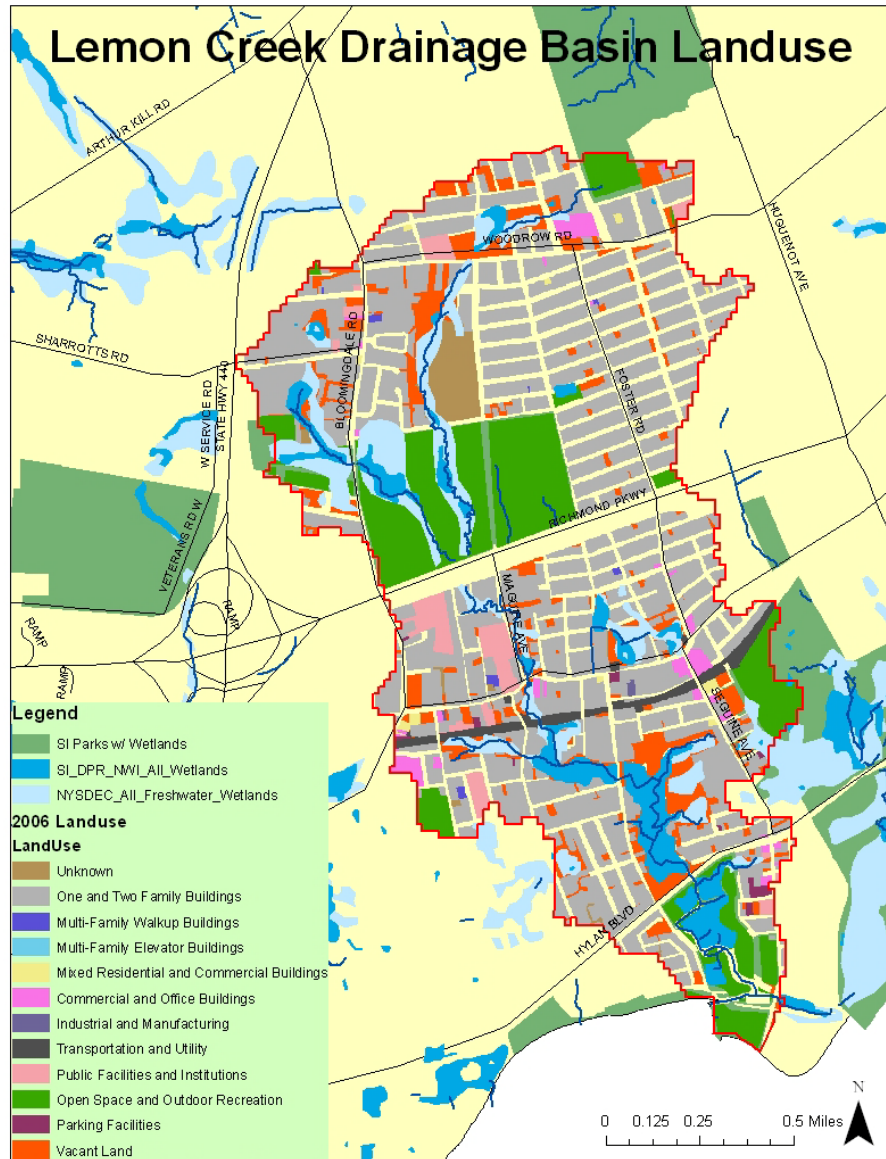
Kyra Appleby and Alessandra Gregg¹
Marit Larson and Ellen Kracauer Hartig²

¹The Earth Institute at Columbia University

²Natural Resources Group (NRG), New York City Department of Parks & Recreation



Mapping Land Use in Drainage Basins



Land Use in the Lemon Creek Watershed

